

Inclinometer K/MT 400

The Inclinometer STANTAN micro serves to record the tilt angle in two directions.

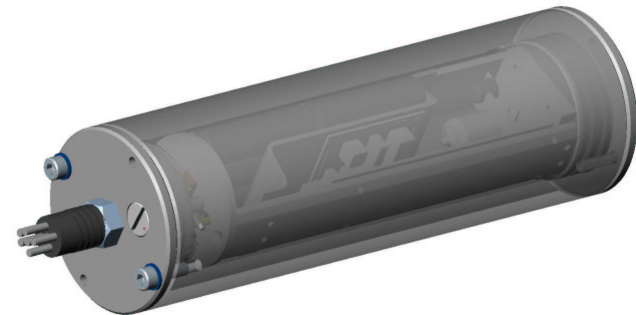
When deploying marine instruments there is often an uncertainty to what extent measurement results are falsified due to the inclination of the sensors at the sea floor.

In order to better assess the magnitude of this systematic error and, if necessary, to eliminate it, the Inclinometer STANTAN micro has been designed.

Programmation is effected via a PC. The start time of measurement recording can be put in with a certain time delay to guarantee that data recording is only done when the instrument is at the bottom.

For deep-sea deployment (up to 6000m depth) the inclinometer is integrated in a pressure-proof, corrosion resistant titanium pressure tube, for shallow water deployment (up to 100m depth) in a POM-tube.

Both versions are suitable for battery or accumulator operation.



Technical data

Deployment depth: 6000m (titanium) - (full ocean depth on request)
100m (POM)

Battery life: max. 2 years
(with Lithium-Thionylchlorid-Cells)

Measuring range: +/- 45° each direction

Resolution: +/- 0,5°

Memory: 32760 records
(i.e. every 32 minutes over 2 year-period)

Power supply: 10,5V internal (Lithium-Thionylchlorid-Cells)
resp. 12V internal (NiCd-storage batteries)

Total length: 220mm + 7mm screw head
+ ~70mm connector incl.locking sleeve
(accumulator)

Diameter: 70mm

Weight / air: titanium: approx. 2,4kg (without batteries)
POM: approx. 1,1kg (incl. accumulator)

Weight / water: titanium: approx. 1,5kg
POM: approx. 200g

Material tube: titanium (deep-sea), POM (shallow water)

Attachment: user`s decision

Temperature: 0°C to +40°C (operation)
-20°C to +60°C (storage and transport)

Components Inclinator STANTAN micro:

- * Pressure tube (titanium or POM)
- * Inclinator
- * Internal battery set (resp. accumulator set for K/MT 400-2)
Inclinator for accumulator operation are equipped with an external connector for data readout and accumulator charge.
- * Internal electronics with memory
- * Programmation and readout cable for RS-232 interface (incl. battery charge cable for K/MT 400-2)
- * Battery charger (for K/MT 400-2)
- * Software "STANTAN.EXE"
- * File with calibration data
- * Manual

Article no.: 4000

Product no.: K/MT 400
K/MT 400-2 (for accumulator operation)